

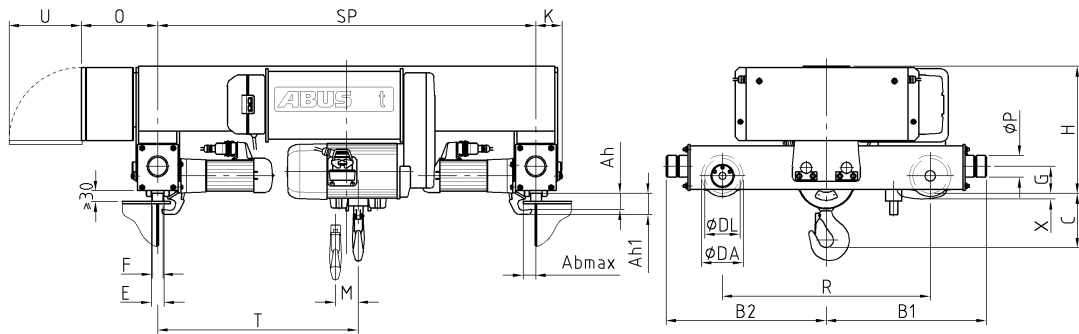
valid for 380 V - 415 V / 50 Hz

load capacity	20000 kg	travelling speed	5 / 20 m/min
FEM group	1Am / M4	lifting speed	0.8 / 5 m/min
hook path	10000 mm	trolley span	2000 mm

**drives**

	<b>hoist motor</b>	<b>travel drive (2 drives)</b>
performance	motor type H 2.9 / 18.8 kW	trolley AZP 200 0.14 / 0.65 kW
duty cycle	40 %	50 %
no. of switching operations	240 c/h	240 c/h
nominal speed	440 / 2840 1/min	620 / 2750 1/min
rated current	12.2 / 34 A	0.68 / 1.68 A
starting current	23.1 / 205 A	1.45 / 8.1 A
cos phi <sub>N</sub>	0.68 / 0.9	0.67 / 0.86
cos phi <sub>A</sub>	0.85 / 0.8	0.8 / 0.82

ED (c/h) values represent the sum of the values for precision and main lifting  
These are divided up into 1/3 (2/3) operation with precision and 2/3 (1/3) operation with main speed



**dimensions and weights**

rope diameter	14 mm	Abmax	55 mm	K	128 mm
cable length	47950 mm	Ah	60 mm	M	168 mm
drum diameter	295 mm	Ah1	81 mm	O	355 mm
rope pulley diameter	324 mm	B1	732 mm	P	80 mm
weight of bottom block	86.0 kg	B2	732 mm	R	970 mm
load hook (E)	6.0 - V	C	385 mm	T	1084 mm
weight	1329 kg	DL	200 mm	U	460 mm
trolley span SP	2000 mm	DA	224 mm		
		E	47 mm - 92 mm		
		F	40 mm - 85 mm	X	0 mm
		G	100 mm		
		H	720 mm		

**load data** for the track according to DIN 4132

<b>load case H</b>			<b>load case HZ</b>		<b>load case HS</b>
R <sub>max</sub> <sup>1)</sup> / wheel	RKA <sub>min</sub> <sup>2)</sup> / wheel	RKA <sub>mit</sub> <sup>3)</sup> / wheel	FSKA <sup>4)</sup> / hoist	FMKA <sup>5)</sup> / hoist	FPUKR <sup>6)</sup> / hoist
56.43 kN	3.26 kN	52.31 kN	16.11 kN	1.96 kN	31.4 kN

<sup>1)</sup> Wheel load with highest hook position without coefficient

<sup>2)</sup> Wheel load under dead weight without coefficient

<sup>3)</sup> Wheel load with mean hook position without coefficient

<sup>4)</sup> Loads transverse to the runway (hoist)

<sup>5)</sup> Loads along the runway (hoist)

<sup>6)</sup> Buffer force valid when using ABUS buffers (hoist)

ABUS Kransysteme GmbH  
Sonnenweg 1  
51647 Gummersbach

**double-rail trolley with wire rope hoist**  
GM 5000.20000 H-201.41.10000.3.D 200.20

01/12/2007